

VIBRATION IMCO Series

IMCO Series High Frequency converters and vibrators are specially designed for the rental sector. Bearing in mind their field of use, robustness and performance are the main features in their design.

VIBRATORS - VIBRATING HOSES



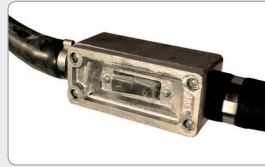
Code 27531

Mild steel body. Heavy duty hose available in standard length of 4,5 meters or extra length of 9 meters. All models include 10 meters of electrical cable with protection H07RN x 2,5 mm², according to the current regulation.

INFORMATION

Vibration Frequency: 12.000 / Min.

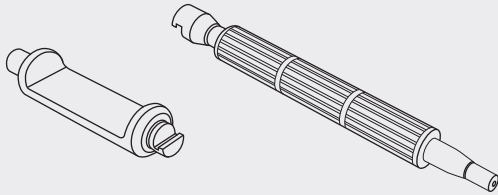
Voltage: 42 V / 200 Hz.



Switch with metal case and protective membrane.



Rubber tip (Code 2753) Plank lining protection.



Independent eccentric
Great vibration capacity.
High performance.

Oversized stator
Service guarantee and high performances.

Ring bearings (SKF group) specially designed to work at high revolutions.

| Code | Model | Cylinder Ø mm | Hose length m | Cylinder length mm | Consumption Amp. |
|-------|-----------|---------------|---------------|--------------------|------------------|
| 2750 | IMCO 36 | 35 | 4,5 | 330 | 6 |
| 2751 | IMCO 50 | 50 | 4,5 | 430 | 9 |
| 27519 | IMCO 50-L | 50 | 9 | 430 | 9 |
| 2752 | IMCO 57 | 57 | 4,5 | 430 | 13 |
| 27529 | IMCO 57-L | 57 | 9 | 430 | 13 |
| 2753 | IMCO 70 | 65 | 4,5 | 490 | 16 |
| 27539 | IMCO 70-L | 65 | 9 | 490 | 16 |
| 27531 | IMCO 75 | 75 | 4,5 | 500 | 21 |

HIGH FREQUENCY CONVERTERS



Code 2802

IMCO Series high frequency converters offer high performance, long useful life and easy maintenance.



Double cast body. Robust and reliable.

No breakages with sharp-edged and the cleaning and maintenance of the equipment are encouraged.
Metal box frame for protection and transportation.
Optimized cooling.

| Code | Model | Power Amp. | Output quantity | Effective power Kw | Tension input | Power output |
|------|-------------|------------|-----------------|--------------------|----------------------------|--------------|
| 2810 | IMCO 1-M | 10 | 1 | 1 | Single-Phase 230 V / 50 Hz | 42 V 200 Hz |
| 2800 | IMCO 1 | 10 | 1 | 1 | Three-Phase 400 V / 50 Hz | 42 V 200 Hz |
| 2811 | IMCO 1,50-M | 18 | 2 | 1,50 | Single-Phase 230 V / 50 Hz | 42 V 200 Hz |
| 2801 | IMCO 1,50 | 18 | 2 | 1,50 | Three-Phase 400 V / 50 Hz | 42 V 200 Hz |
| 2802 | IMCO 2,50 | 35 | 3 | 2,50 | Three-Phase 400 V / 50 Hz | 42 V 200 Hz |